



## Event Information

The Autism Society of Berks County's 9th Annual "Help Solve the Puzzle: Walk for Autism Awareness" will be held on **Sunday, September 11, 2011** at the **Berks County Heritage Center**. (rain or shine)

Walk as an individual, as a family, or form a team to walk together. Raise money by asking friends, family members, co-workers, and neighbors to sponsor you with any dollar amount. Turn your pledge money in at Walk registration on 9/11/11.

### Team captains:

Pre-register your team by mailing the attached form or by emailing the information to [info@autismsocietyofberks.org](mailto:info@autismsocietyofberks.org) by 8/20/11.

### Individual Walkers and Team Members:

Bring the completed form to the registration tables in the barn the day of the event. You do NOT need to mail it ahead of time unless you are a team captain registering the team name.



Pledges totaling -- Will receive  
\$100 - \$149 -- T-shirt  
\$150 - \$249 -- T-shirt and ribbon pin  
\$250 - \$499 -- T-shirt, pin, and sweatshirt  
\$500 and up -- above plus surprise gift!

Prizes will be awarded to the three walkers and three pre-registered teams who raise the most money!

Bring out the entire family to have a good time while supporting this very worthy cause!

Print additional information, registration forms, sponsor forms, and directions at [www.autismsocietyofberks.org](http://www.autismsocietyofberks.org). If you have questions or would like to volunteer, call **610-736-3739** or email us at [info@autismsocietyofberks.org](mailto:info@autismsocietyofberks.org).



## Event Schedule:

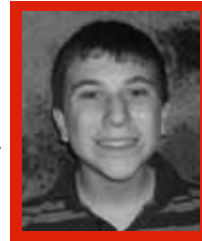
9:30 - 11 a.m. - Register and walk on your own  
10:15 - 1 p.m. - Lunch, raffle, entertainment, children's activities, and resource fair  
12:15 p.m. - Raffle winners announced  
1:00 p.m. - Prizes awarded to top three walkers and top three teams (Team captains must pre-register team name by 8/20/11 to qualify for team prizes.)

- \*You may want to bring lawn chairs or picnic blankets.
- \*Due to limited parking, please car pool when possible.
- \*The entire Walk is 3.8 miles; however, you do not have to complete the entire distance.
- \*Pets are prohibited.

## About Autism

Roughly 1 in 110 children is diagnosed with an autism spectrum disorder. If 4 million children are born in the United States every year, approximately 36,500 children will eventually be diagnosed on the spectrum.

Autism is a lifelong neurological disability that impacts the normal development of areas in the brain affecting social interaction, verbal and nonverbal communication, and play and leisure skills. It may be associated with rigid routines and repetitive behaviors. Individuals with autism may also have fine and gross motor delays, sleep and seizure disorders, as well as eating, digestion, and sensory issues. Autism is a "spectrum disorder" with symptoms and characteristics that present themselves in a variety of combinations, from mild to severe. No two individuals with autism have the same level of abilities or symptoms.



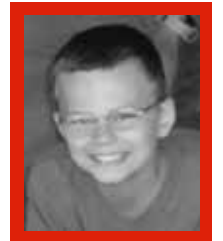
## About Autism Society of Berks

We are parents and family members of individuals with autism, as well as interested professionals and volunteers. We provide information and support to those affected by autism. We hope to generate a greater awareness and understanding of autism, so that individuals can be diagnosed early, receive appropriate treatment, and be met with patience and understanding in our community.



## How Will My Donation Help?

The funds raised at our Walk enable us to: maintain office space, pay for services for our monthly Chapter meetings and our volunteer run phoneline, print and distribute our newsletter, pay for advertising including the printing of billboards and newspaper ads for Autism Awareness Month, donate scholarships for summer camps, offer a mini-grant program to local school districts, provide (at no cost to the families) social skills theatre camp, art workshops, and music therapy groups for children on the spectrum as well as their siblings, provide community outings for children with autism and their families, and more!



## Thank You

We would like to thank our sponsors, many volunteers, and walkers. Your generous support of the Walk for Autism Awareness is appreciated, and an important part of its success! Together, we can make a difference in the lives of those affected by autism.



**Children's Clinic of Wyomissing  
Community Care Behavioral Health  
Pediatric Therapy & Feeding Services**